

FEATURES

- High efficiency
- High current capability
- High Reliability
- High surge current capability
- Glass passivated chip junction
- Solder dip 275 °C max. 7 s, per JESD 22-B106

MECHANICAL DATA

- **Package:** DO-201AD(DO-27)
Molding compound meets UL 94 V-0 flammability rating, RoHS-compliant
- **Terminals:** Tin plated leads, solderable per J-STD-002 and JESD22-B102
- **Polarity:** Color band denotes cathode end

MAXIMUM RATINGS (Ta=25°C Unless otherwise specified)

PARAMETER	SYMBOL	UNIT	HER301 G	HER302 G	HER303 G	HER304 G	HER305 G	HER306 G	HER307 G	HER308 G
Device marking code			HER301 G	HER302 G	HER303 G	HER304 G	HER305 G	HER306 G	HER307 G	HER308 G
Maximum Repetitive Peak Reverse Voltage	V _{RRM}	V	50	100	200	300	400	600	800	1000
Maximum RMS Voltage	V _{RMS}	V	35	70	140	210	280	420	560	700
Maximum DC blocking Voltage	V _{DC}	V	50	100	200	300	400	600	800	1000
Average Forward Current @60Hz sine wave, Resistance load, Ta=50°C	I _{F(AV)}	A	3.0							
Forward Surge Current (Non-repetitive) @60Hz Half-sine wave, 1 cycle, Tj=25°C	I _{FSM}	A	125							
Forward Surge Current (Non-repetitive) @1ms, square wave, 1 cycle, Tj=25°C			250							
Current squared time @1ms≤t≤8.3ms Tj=25°C, Rating of per diode	I ² t	A ² s	65							
Typical junction capacitance @Measured at 1MHz and Applied Reverse Voltage of 4.0 V.D.C	C _j	pF	65			43		35		
Storage Temperature	T _{stg}	°C	-55 ~ +150							
Junction Temperature	T _j	°C	-55 ~ +150							

ELECTRICAL CHARACTERISTICS (Ta=25°C Unless otherwise specified)

PARAMETER	SYMBOL	UNIT	TEST CONDITIONS	HER301 G	HER302 G	HER303 G	HER304 G	HER305 G	HER306 G	HER307 G	HER308 G
Maximum instantaneous forward voltage drop per diode	V _F	V	I _F M=3.0A	1.0			1.3		1.7		
Maximum DC reverse current at rated DC blocking voltage per diode	I _R	μA	T _j =25°C	2.5							
			T _j =125°C	100							
Maximum reverse recovery time	t _r	ns	I _F =0.5A, I _R =1.0A, I _r =0.25A	50					75		

■ **THERMAL CHARACTERISTICS** ($T_a=25^{\circ}\text{C}$ Unless otherwise specified)

PARAMETER	SYMBOL	UNIT	HER301G	HER302G	HER303G	HER304G	HER305G	HER306G	HER307G	HER308G
Typical Thermal Resistance	$R_{\theta J-A}$	$^{\circ}\text{C/W}$	30							

■ **PACKAGING INFORMATION**

PREFERRED P/N	PACKAGE CODE	UNIT WEIGHT(g)	MINIMUM PACKAGE(pcs)	INNER BOX QUANTITY(pcs)	OUTER CARTON QUANTITY(pcs)	DELIVERY MODE
HER301G~HER308G	D1	Approximate 1.05	1250	1250	12500	Tape
HER301G~HER308G	C1	Approximate 1.05	250	250	12500	Bulk

■ **CHARACTERISTICS (TYPICAL)**

FIG.1: I_o - T_a Curve

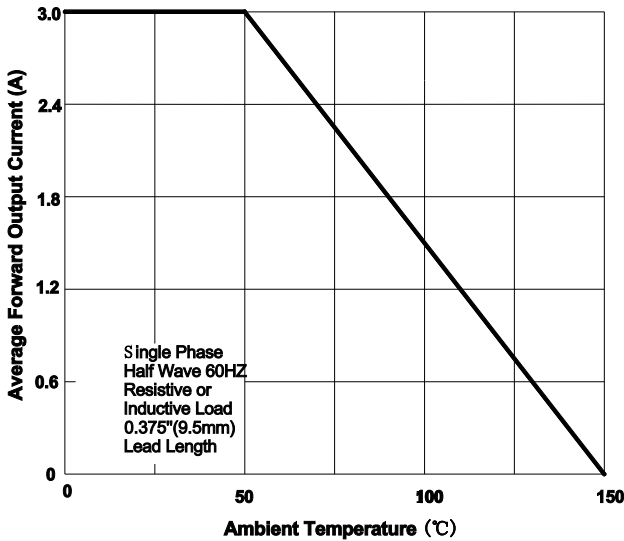


FIG.2: Forward Surge Current Capability

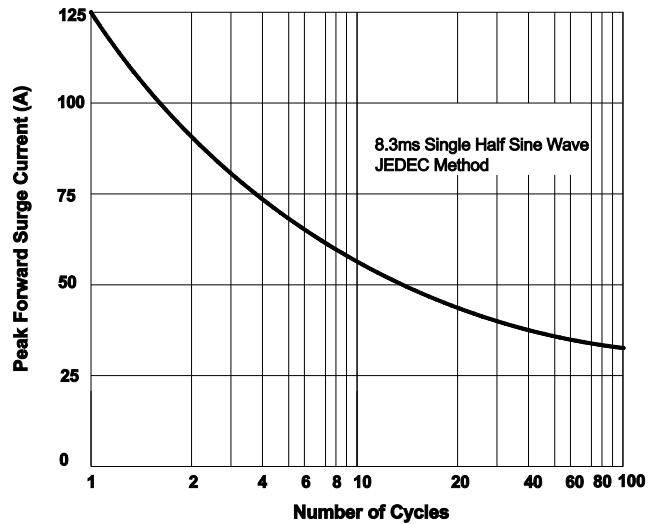


FIG.3: Forward Voltage

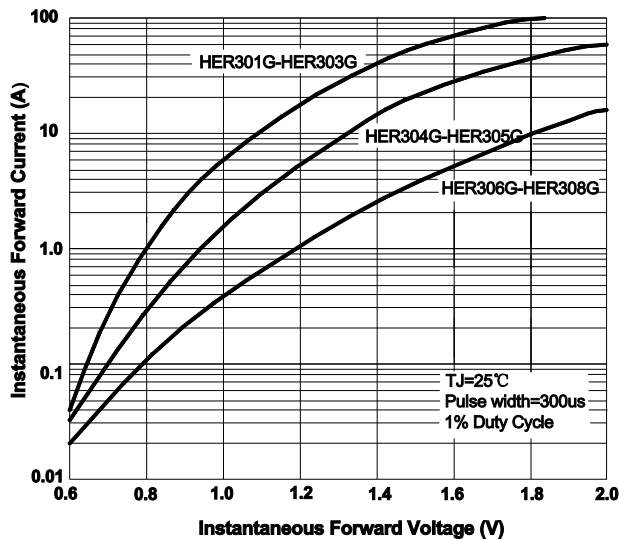


FIG.4: Typical Reverse Characteristics

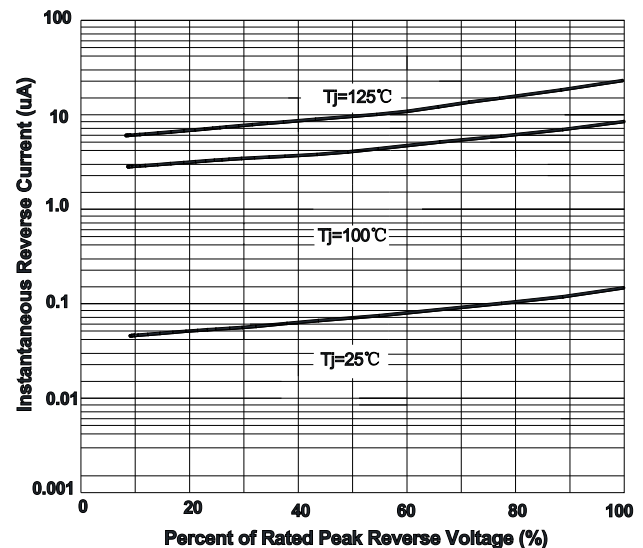
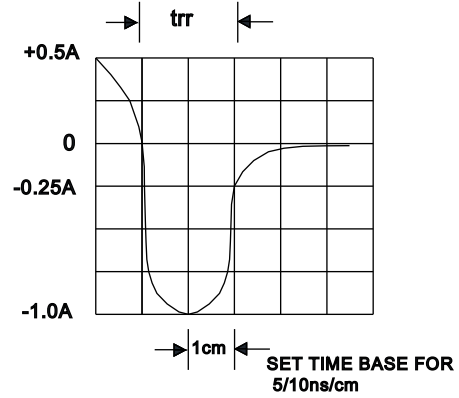
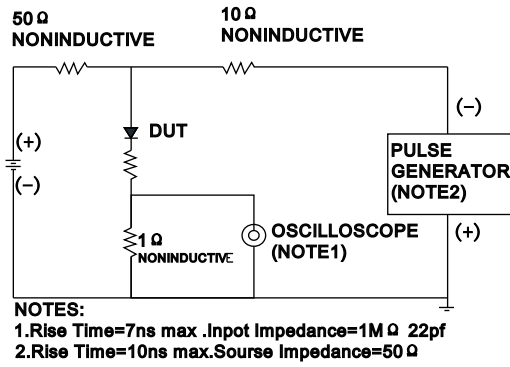
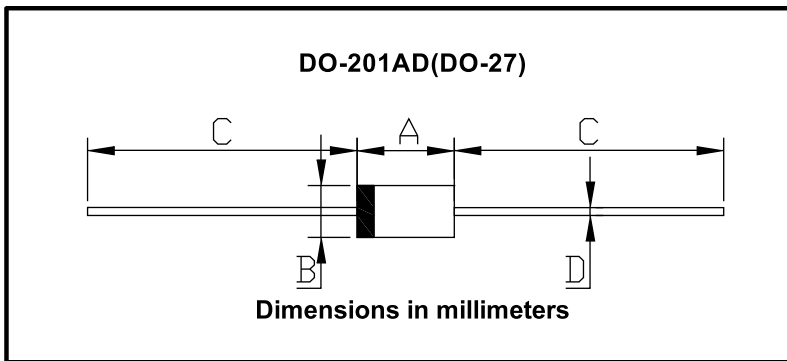


FIG.5: Diagram of circuit and Testing wave form of reverse recovery time



■ **OUTLINE DIMENSIONS**



DO-201AD(DO-27)		
Dim	Min	Max
A	8.50	9.50
B	5.00	5.60
C	25.4	/
D	1.20	1.30