

■ **FEATURES**

- UL recognition, file #E230084  
Universal 3-way terminals: snap-on, wire wrap-around, or PCB mounting
- High surge current capability
- Solder dip 275 °C max. 7 s, per JESD 22-B106

■ **TYPICAL APPLICATIONS**

General purpose use in AC/DC bridge full wave rectification for power supply, home appliances, office equipment, industrial automation applications.

■ **MECHANICAL DATA**

- Package : BR- L  
Molding compound meets UL 94 V-0 flammability rating, RoHS-compliant
- Terminals : Tin plated leads, solderable per J-STD-002 and JESD22-B102

■ **MAXIMUM RATINGS** (T<sub>a</sub>=25°C Unless otherwise specified )

PARAMETER	SYMBOL	UNIT	BR35005L	BR3501L	BR3502L	BR3504L	BR3506L	BR3508L	BR3510L
Device marking code			BR35005L	BR3501L	BR3502L	BR3504L	BR3506L	BR3508L	BR3510L
Repetitive Peak Reverse Voltage	VRRM	V	50	100	200	400	600	800	1000
Average Rectified Output Current @60Hz sine wave, R-load, With heatsink, T <sub>c</sub> =55	I <sub>O</sub>	A	35						
Surge(Non-repetitive)Forward Current @60HZ Half- sine Wave, 1 cycle, T <sub>a</sub> =25	IFSM	A	400						
Current Squared Time @1ms≤t≤8.3ms T <sub>j</sub> =25 , Rating of per diode	i <sup>2</sup> t	A <sup>2</sup> S	660						
Storage Temperature	T <sub>stg</sub>		-55 ~+150						
Junction Temperature	T <sub>j</sub>		-55 ~+125						
Dielectric Strength, Terminals to case, AC 1 minute	V <sub>dis</sub>	KV	2.5						
Mounting Torque	TOR	kg·cm	10						

■ **ELECTRICAL CHARACTERISTICS** (T<sub>a</sub>=25°C Unless otherwise specified )

PARAMETER	SYMBOL	UNIT	TEST CONDITIONS	BR35005L	BR3501L	BR3502L	BR3504L	BR3506L	BR3508L	BR3510L
Maximum instantaneous forward voltage drop per diode	V <sub>FM</sub>	V	I <sub>FM</sub> =17.5A	1.1						
Maximum DC reverse current at rated DC blocking voltage per diode	I <sub>RRM</sub>	μA	V <sub>RM</sub> =V <sub>RRM</sub>	10						

■ **THERMAL CHARACTERISTICS** (T<sub>a</sub>=25°C Unless otherwise specified )

PARAMETER	SYMBOL	UNIT	BR25005L	BR2501L	BR2502L	BR2504L	BR2506L	BR2508L	BR2510L
Thermal Resistance Between junction and case, With heatsink	R <sub>θ J-C</sub>	/W	2.1						

■ **PACKAGING INFORMATION**

PREFERRED P/N	PACKAGE CODE	UNIT WEIGHT(g)	MINIMUM PACKAGE(pcs)	INNER BOX QUANTITY(pcs)	OUTER CARTON QUANTITY(pcs)	DELIVERY MODE
BR35005L~BR3510L	A1	Approximate 17.1	60	60	600	Paper Box

■ **CHARACTERISTICS (TYPICAL)**

FIG1:Io-Tc Curve

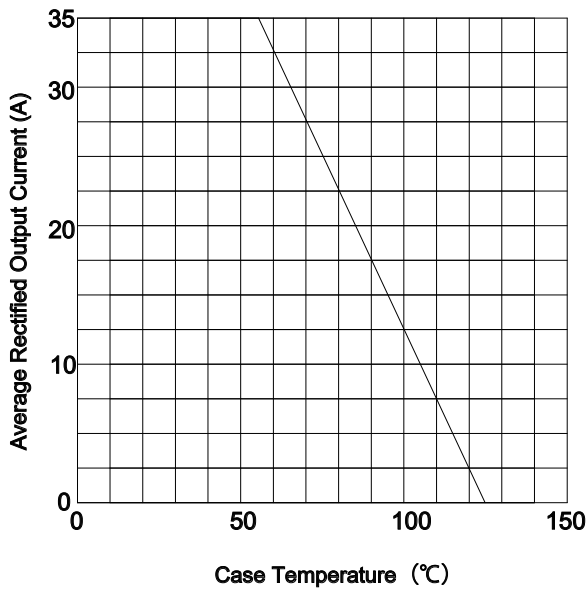


FIG2:Surge Forward Current Capability

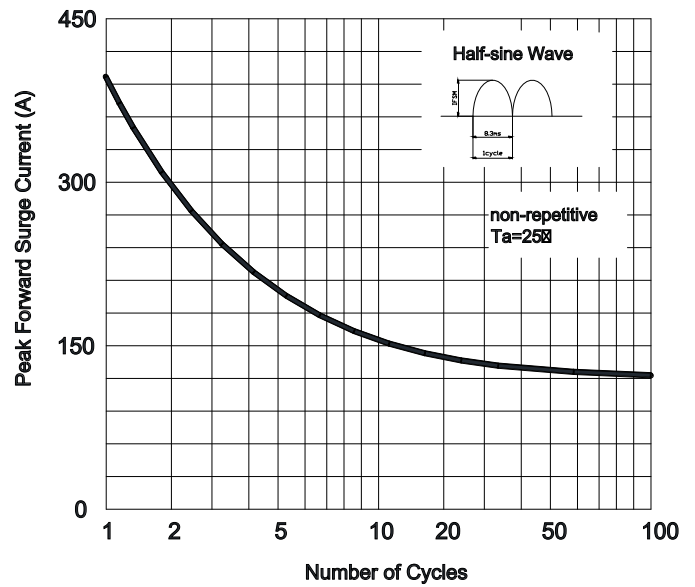


FIG3:Instantaneous Forward Voltage

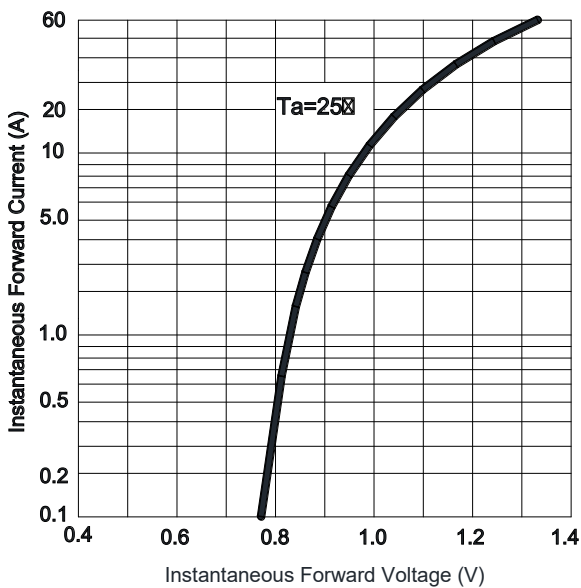
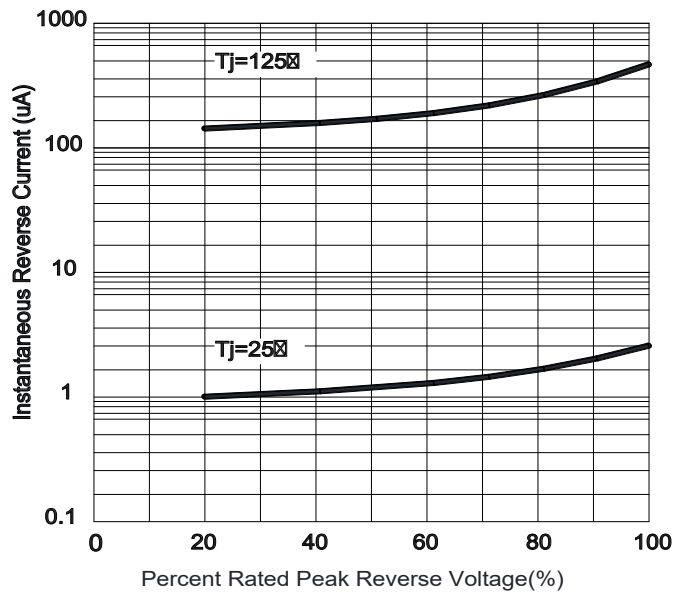
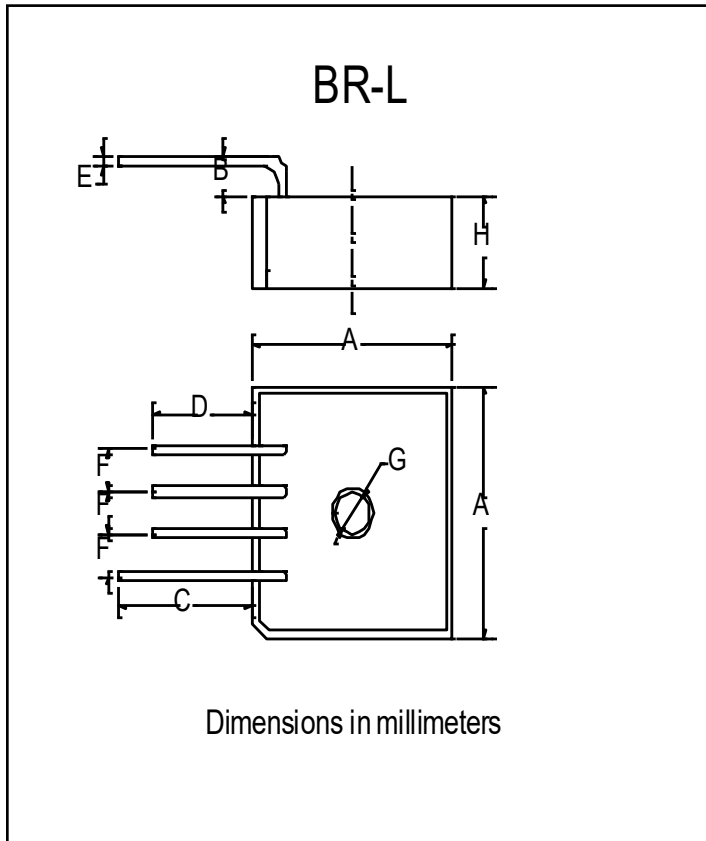


FIG4:Typical Reverse Characteristics



■ **OUTLINE DIMENSIONS**



BR-L		
Dim	Min	Max
A	28.2	28.8
B	3.0	4.5
C	19.1	
D	13.9	
E	1.23	1.33
F	4.6	5.6
G	5	5.5
H	10.8	11.2