



■ **FEATURES**

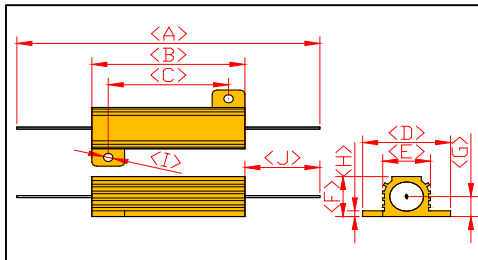
- Small size, high power rating and performance
- Excellent space factor
- Strongly resistant to moisture, solvent & insulation.
- Self-extinguish material is used in molding.
- Standard winding and non-inductive winding types
- High stability, strong construction, ultra precision

■ **DIMENSIONS AND RANGE**

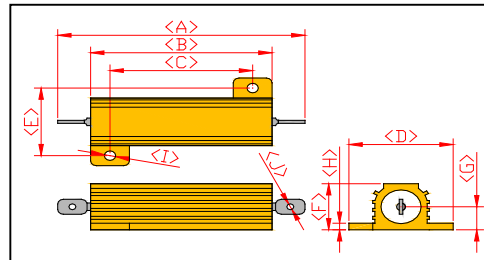
Series	Power Rating (Watts @ 25°C)	Dimensions (mm)											Type	Resist. Range	Ref.
		A±2.5	B±1	C±1	D±0.5	E±1	F±1	G±1	H±0.5	I±0.2	J±1.5	K			
RHA-5W	5	82	15.3	11.3	16.5	9.4	8	4	1.4	2.2	33	-	A	0.01~ 5K	RE60
RHA-10W	10	31.6	18.7	14.3	20.4	16.7	10	5	2	2.2	2.2	-	B	0.01~ 10K	RE65
RHA-25W	25	48	27.8	18.6	27.4	20	14.8	7.7	2	3.4	2.2	-	B	0.01~ 25K	RE70
RHA-50W	50	70	51	38.5	29.4	22.9	15.8	7.7	2.4	4.2	2.2	-	B	0.01~ 50K	RE75
RHA-85W	85	94	75	38.5	29.4	14.4	15.8	7.7	2.4	3.2	2.2	-	C	0.01~ 50K	
RHAS-100W	100	98	66	35	4.5	47	36	25	13	3.2	15	M4	E	0.01~ 50K	
RHA-100W	100	122	90	69.2	5.2	71.5	45	44	20±1	4.4	16	M6	D	0.01~ 50K	RE77
RHA-250W	250	178	114	76	5.2	77	57.8	54.5	25±1	5	32	M6	F	0.01~ 50K	RE80

■ **OUTLINE DIMENSIONS**

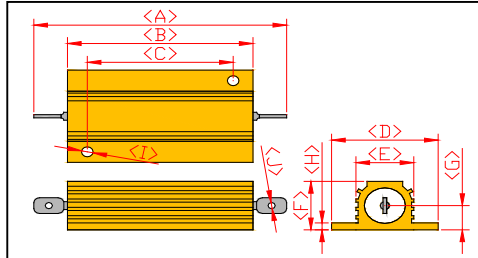
A-Type



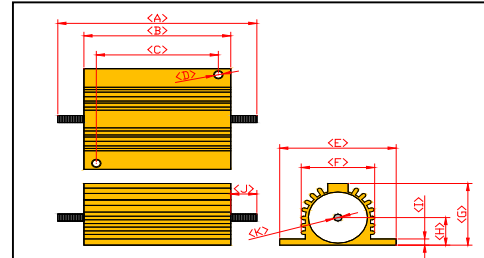
B-Type



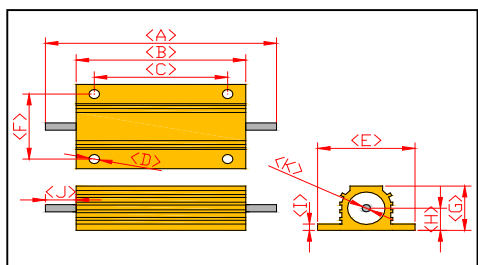
C-Type



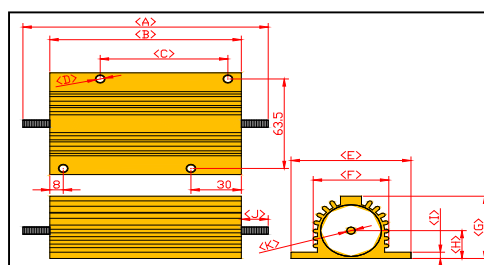
D-Type



E-Type



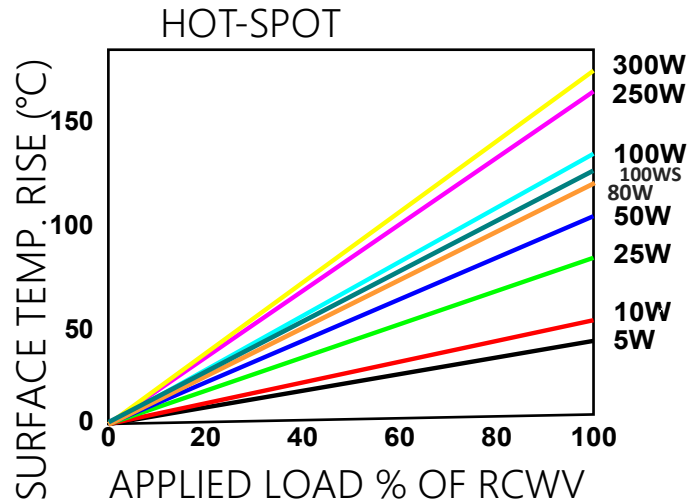
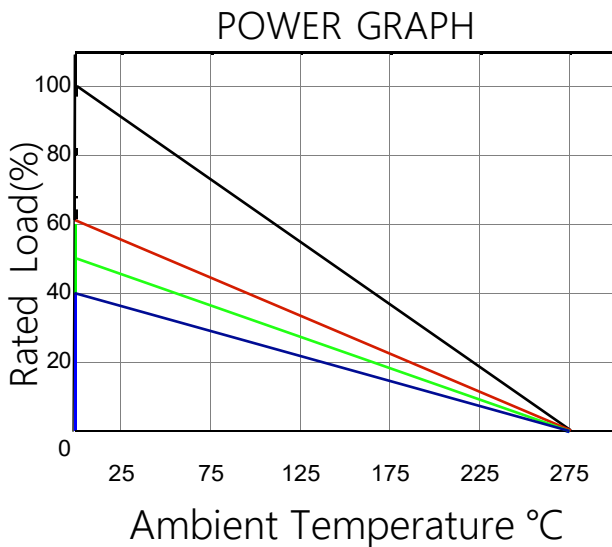
F-Type



■ **ELECTRICAL CHARACTERISTICS** ($T_a=25^{\circ}\text{C}$ Unless otherwise specified)

Characteristics	Limits	Test Methods
Resistance Tolerance	Resistance Tolerance $0\Omega 1\sim 100\text{K}\Omega$	JIS-C-5202 5-1
Temperature Coefficient	$\pm 200\text{ppm}/^{\circ}\text{C}$ max.	JIS-C-5202 5-2b
Power Rating Load	$\Delta R/R \leq \pm(1\%+0.05\Omega)$ Surface	JIS-C-5202 5-4
Short-Time Overload	$\Delta R/R \leq \pm(2\%+0.05\Omega)$	JIS-C-5202 5-5
Insulation Resistance	DC500V 100M Ω min	JIS-C-5202 5-6
Dielectric Withstanding Voltage	AC3000V 60Sec.	JIS-C-5202 5-7

■ **THERMAL CHARACTERISTICS** ($T_a=25^{\circ}\text{C}$ Unless otherwise specified)



■ **SHORT-TIME OVERLOAD RATING**

Load Time (Second)	1	2	3	4	5	10	30	60	180	300	600	900
Power Incerase	2600	2000	1600	1400	1300	1000	600	450	200	150	120	110

■ PART NUMBERING CODE

RHA	50W	5K0	J
Type	Power Rating	Resistance	Tolerance
(NRHA for non-inductive wound)	5W	1Ω = 1R0	F± 1%
	10W	10Ω = 10R	G± 2%
	25W	100Ω = 100R	J± 5%
	50W	1KΩ = 1KR	
	85W	5KΩ = 5K0	
	100W	50KΩ = 50K	
	250W		

■ PERFORMANCE

Parameters	Test Conditions	Specifications
Short time Over Load	5X wattage rating-5sec	Δ R±(0.5%+0.05Ω)MAX
Moisture Resistance	Temp 40°C moisture 95% DC100V 500HR	Δ R±(0.5%+0.05Ω)MAX
Moisture Load Life	Temp 40°C moisture 95% 1/10X Wattage rating (1.5Hr ON-0.5Hr OFF)-Repeat 1000Hr	Δ R±(0.5%+0.05Ω)MAX
Load Life	Load Rating(chass is mounted) (1.5Hr ON 0.5Hr OFF) -Repeat 1000Hr	Δ R±(1.5%+0.05Ω)MAX
Vibration	10c/s~50c/s~10c/s(lmin)2Hr each of paralleled and right angle	Δ R±(0.2%+0.05Ω)MAX
Heat Resistance	275°C 2Hr	Δ R±(0.5%+0.05Ω)MAX
Dielectric Strength	RHA-5, RHA-10, RHA-25 1000V RHA-50 1500V RHA-100 RHA-250 2500V	Δ R±(0.2%+0.05Ω)MAX
Insulation Resistance	Under the same test condition of Dielectric Strength Load DC500v and measure the insulation	1000M Ω min
Terminal Strength	Pull Test (30 sec Min) RHA-50 1kg, RHA-10 2.3kg, RHA-25, RHA-50 4.5kg Torque Test (5~15sec), RHA-100 27kg-cm, RHA-250 36Kg-cm	Δ R±(0.2%+0.05Ω)MAX