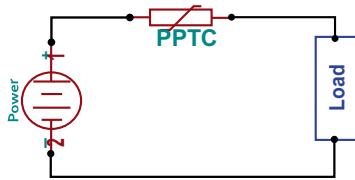


the  
**PPTC Selection Guide**

**1 Circuit Parameters**  
Determine your circuit parameters



- Circuit Operating Current
- Maximum Operating Voltage
- Maximum Interrupt Current
- Maximum Ambient Operating Temperature

**2 Voltage & Current Rating**  
Select a Fuzetec PPTC Device with proper electrical characteristics



$V_{Max}/I_{Max}$  are the maximum voltage/current PPTC devices can withstand without damage  
 Hold Current ( $I_H$ ) is the maximum current which a PPTC device will keep in low resistance state at 23°C  
 Trip Current ( $I_T$ ) is the minimum current which a PPTC will trip at 23°C  
 Check the electrical characteristics table to ensure the PPTC device can match the circuit parameters

**3 Ambient Temperature**  
Evaluate the maximum circuit operating ambient temperature



PPTC device is temperature sensitive, check the Thermal Derating table to verify the performance of PPTC device you select in Step 2 under different ambient temperature

**4 Time to Trip**  
Determine Time to Trip for desired protection capabilities



Time to Trip is the amount of time that a PPTC device need to transfer low resistance state to high resistance "Tripped" state under fault condition.  
 Make sure the PPTC device to provide the desired protection capabilities

**5 Check Dimension**

We provide a various types of packages and different dimensions, use the datasheet dimension table to compare the PPTC device you selected and your application's